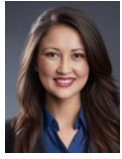


1 Bedroom Garden Cottage To Let in Sydenham



Stacy Fernandez
069 354 3613
stacy.f@dpg.co.za

Contact Head Office - Dormehl
Lite

012 0000000

1170 Moulton Avenue
Waverley
0184




Web Ref DPR19035



R4,000 pm

Lease Period 12 months **Availability** Immediately **Deposit** R4,000
Annual Escalation Negotiable

 1  1

ONE BEDROOM COTTAGE TO LET!

Dormehl Phalane Property Group offers you this one bedroom cottage with lounge, kitchen and bathroom suitable for single or a couple with sober habits. There is prepaid meters and the property is fully fenced. Immediate occupancy. This property has no built in cupboards in bedrooms. Close to all amenities.

Features

Interior

Bedrooms	1
Bathrooms	1
Kitchens	1
Recep. Rooms	1
Furnished	No

Exterior

Carports / Parkings	1
Security	No
Pool	No
Views	False

Sizes

Land Size	750m ²
-----------	-------------------