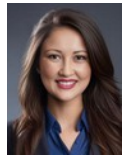


## 3 Bedroom House To Let in Sydenham



**Stacy Fernandez**  
069 354 3613  
stacy.f@dpg.co.za

Contact Head Office - Dormehl  
Lite

012 0000000

1170 Moulton Avenue  
Waverley  
0184



Web Ref DPR19033



**R10,500 pm**

**Lease Period** 6 months **Availability** Immediately **Deposit** R10,500  
**Annual Escalation** Negotiable

3 1

**Fully Furnished 3 bedroom house to Let!**

Dormehl Phalane Property group offers you this fully furnished 3 bedroom home to let in Sydenham suitable for corporate letting or a family. This 3 bedroom is fully fitted with lounge, dining and entrance hall. it has fully fitted kitchen with prepaid meters. One family bathroom with open parking area fully fenced it is a shared property. Immediate occupancy.

### Features

#### Interior

Bedrooms	3
Bathrooms	1
Kitchens	1
Recep. Rooms	2
Furnished	No

#### Exterior

Carpports / Parkings	2
Security	No
Pool	No
Views	False

#### Sizes

Land Size	780m <sup>2</sup>
-----------	-------------------