

1 Bedroom Apartment To Let in Westville



Jenny Grant
079 321 2204
jennygrant@dpg.co.za



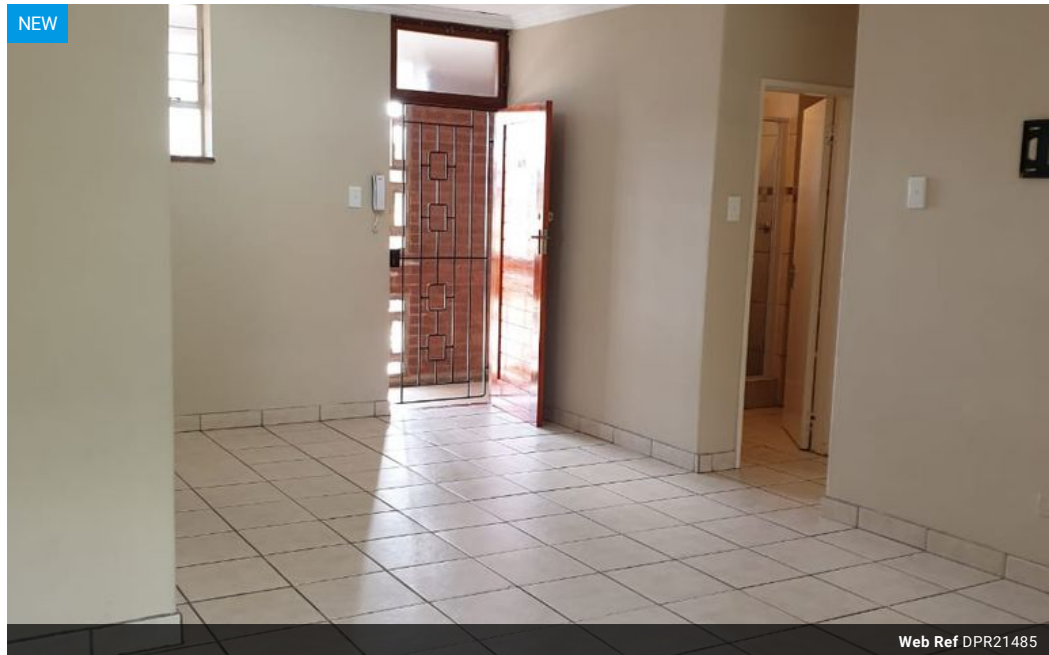
Sheri Minter
082 224 0400
sheriminter@dpg.co.za

Contact Westville

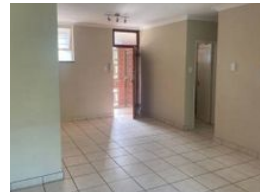
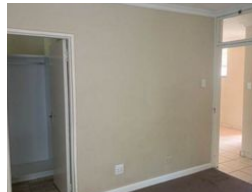
031 2669091

Shop 1, Gordana Court,
22/26 Salisbury Avenue,
Westville

NEW



Web Ref DPR21485



R8,500 pm

Lease Period 12 months

Availability Negotiable

Deposit -

Annual Escalation -



1



1

Charming One-Bedroom Apartment in the Heart of Westville – Your Urban Haven Awaits!

Welcome to your new sanctuary, nestled conveniently between two shopping powerhouses—Checkers and Pick n Pay. This delightful one-bedroom apartment, located on the 3rd floor of a secure building, is the perfect blend of comfort, style, and convenience, ideal for a single professional or a cozy couple.

Key Features:

Prime Location: Enjoy unparalleled access to the M13 and a plethora of amenities. With your favorite take-out spots, a modern gym, healthcare facilities, and public transportation right at your doorstep, everything you need is just moments away.

Spacious Living: This thoughtfully designed apartment features a generous open-plan lounge and dining area that invites you to unwind after a busy day. Large windows fill the space with natural light, creating a warm and welcoming atmosphere.

Cozy Bedroom Retreat: The...

Features

Interior

Bedrooms	1
Bathrooms	1
Kitchens	1
Recep. Rooms	1
Furnished	No

Exterior

Carports / Parkings	1
Security	Yes
Pool	No
Views	False



<https://www.dpgprop.co.za>