



Welma Deysel
082 540 6828
welmadeysel@dpg.co.za

Contact Pretoria Moot

012 3323677

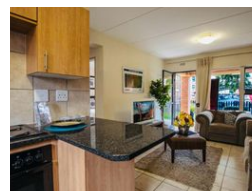
1170 Moulton Ave
Waverley
Pretoria
0186

RENTED



SOLE MANDATE

Web Ref DPR20315



R6,950 pm

🛏 2 🚿 1

Monthly Levy R1,043

Monthly Rates R440

Lease Period 12 months

Availability Immediately

Deposit R6,950

Annual Escalation -

Lease Excludes:

Pre-Paid Electricity

Modern Living for Professionals 2 Bedroom Lock-Up-and-Go Ground-Floor Apartment in Boardwalk

Step into comfort and contemporary style with this spacious 2-bedroom, 1-bathroom apartment, ideal for busy professionals and couples. Nestled within a secure, well-maintained complex, this Ground-floor unit offers peace of mind and effortless living.

Apartment Highlights:

- 2 generous bedrooms with built-in cupboards
- Open-plan kitchen and lounge—perfect for entertaining or unwinding
- Full bathroom with both a bath and shower
- Patio—your personal space for morning coffee or evening sunsets
- Ideal location with privacy

Smart & Secure Living:

- Fibre-ready—stay connected with high-speed internet
- Energy-efficient solar geyser and pre-paid utilities
- 24-hour biometric security, CCTV, and controlled access for total peace of mind

Extra Perks:

Pre-paid Electricity

Features

Interior

| | |
|--------------|-----|
| Bedrooms | 2 |
| Bathrooms | 1 |
| Kitchens | 1 |
| Recep. Rooms | 1.5 |
| Furnished | No |

Exterior

| | |
|---------------------|-------|
| Carports / Parkings | 1 |
| Security | Yes |
| Pool | No |
| Views | False |

Sizes

| | |
|------------|------------------|
| Floor Size | 54m ² |
|------------|------------------|