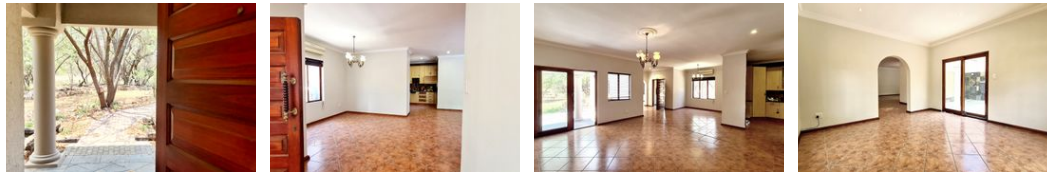
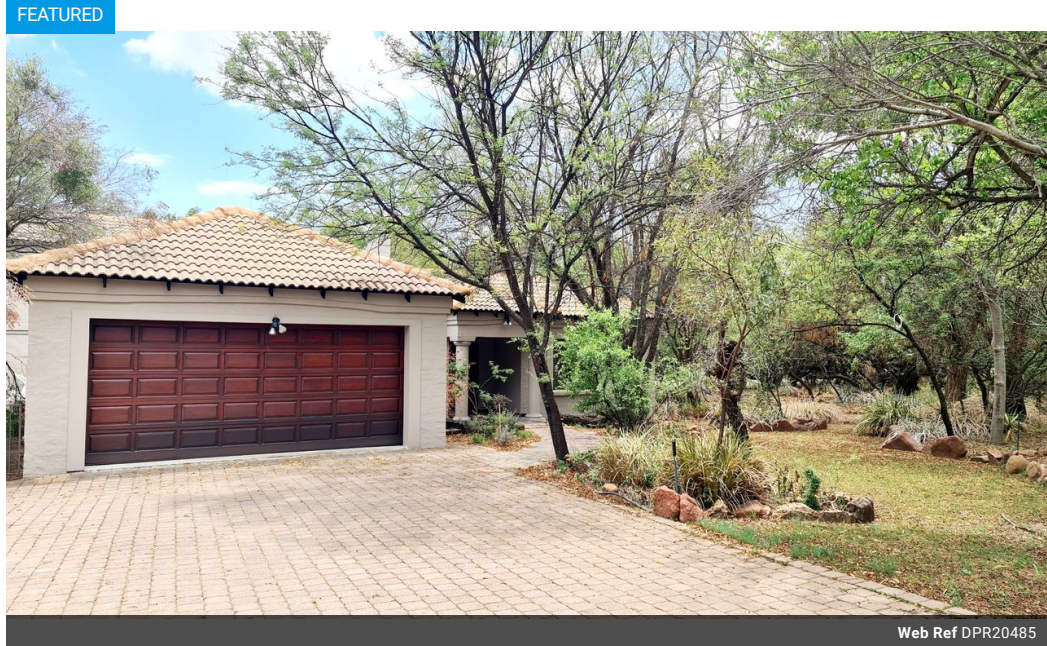


**Owen Dormehl**  
082 654 0024  
owendormehl@dpg.co.za

Contact Pretoria Moot  
**012 3323677**  
1170 Moulton Ave  
Waverley  
Pretoria  
0186



**R22,500 pm**

**Monthly Levy** R2,950    **Monthly Rates** R4,380    **Lease Period** 12 months  
**Availability** Immediately    **Deposit** R22,500    **Annual Escalation** -

 3    
  2.5    
  2

## Bushveld Luxury Meets Everyday Living: Own Your Slice of Paradise in Leeuwfontein Estate!

Imagine waking up every day in the heart of the bushveld, surrounded by pristine nature, abundant wildlife, and pure tranquility. This isn't just a home; it's a lifestyle upgrade.

Here's why this property destroys the competition:

### Unmatched Features:

**Your Own Green Oasis:** A lush garden with indigenous plants and roaming wildlife. This is the kind of backyard people pay to visit. You'll live in it.

**Room for Everyone:** 3 bedrooms that actually feel like a retreat. The main? Ensuite luxury with a private sitting room/study. The other two? Spacious and serviced by a full bathroom. Guests, family, or friends – everyone gets comfort.

**Living Designed for YOU:** Open-plan? Check. Sweeping views from your balcony? Double-check. And the kitchen? Fully equipped with wooden cupboards, a pantry the size of some people's kitchens, and a...

## Features

Pets Allowed		Yes			
Interior		Exterior		Sizes	
Bedrooms	3	Garages	2	Land Size	10,000m²
Bathrooms	2.5	Security	Yes		
Kitchens	1	Pool	No		
Recep. Rooms	3	Views	False		
Studies	2				
Furnished	No				
Extras					
Security Estate Wildlife Estate					