

2 Bedroom Apartment Rented in Somerset Park



Nadine Matthee
082 377 7086
nadinematthee@dpg.co.za

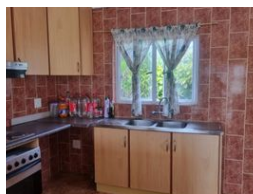
Contact Umhlanga

031 5612346

Shop 13A Granada Square
16 Chartwell Drive
Umhlanga



Web Ref DPR20780



R9,500 pm

2 1

Monthly Levy R1 **Monthly Rates** R1 **Lease Period** 12 months
Availability Immediately **Deposit** R9,500 **Annual Escalation** -
Lease Excludes:
Prepaid Utilities

2 Bedroom Unfurnished Apartment - Somerset Park, Umhlanga

Unfurnished 2 Bedroom Apartment on a Residential Property (Upstairs Unit)
Suit SINGLE/COUPLE (with 1 Child acceptable)
1 PARKING BAY (Tandem Car Port) or *2 Small Cars
Open Plan Layout - Kitchen, Lounge/Dining Area
Plumbing for a Washing Machine
1 Bathroom *in the Main Bedroom
Tiled throughout, with a small Patio, and Fibre to the Property
Small Indoor Pets Accepted, with Owner Pre-Approval
Rental excludes Prepaid Utilities
Available Immediate on Lease

Features

Pets Allowed	Yes		
Interior		Exterior	
Bedrooms	2	Carports / Parkings	1
Bathrooms	1	Security	Yes
Kitchens	1	Pool	No
Recep. Rooms	2	Views	False
Furnished	No		

