



Nadine Matthee
082 377 7086
nadinematthee@dpg.co.za

Contact Umhlanga

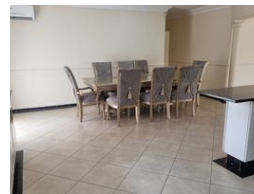
031 5612346

Shop 13A Granada Square
16 Chartwell Drive
Umhlanga

3 Bedroom House To Let in Somerset Park



Web Ref DPR19127



R23,000 pm

3 2 2

Monthly Levy R1 **Monthly Rates** R1 **Lease Period** 12 months
Availability Immediately **Deposit** R23,000 **Annual Escalation** -
Lease Excludes:
Utilities
Prepaid Electricity

3 Bedroom Unfurnished House - Somerset Park

Secure 3 Bedroom House, 2 Bathrooms, mes, Family Home
Open Plan Layout - Spacious Lounge/Dining Area & Kitchen/Scullery
Good Quality Fittings & Finishes
Porcelain Tiled throughout, Built-In Cupboards, Fibre Line and Alarm
2 Paved Patios, one on the Side of the House & one in the Front
Double Auto Garage, direct access into the House
Small to Medium sized Pets permitted
Available IMMEDIATE on Lease
Rental Excludes Utilities (Prepaid Electricity)

Features

Pets Allowed	Yes		
Interior		Exterior	
Bedrooms	3	Garages	2
Bathrooms	2	Carports / Parkings	2
Kitchens	1	Security	Yes
Recep. Rooms	2	Pool	No
Furnished	No	Views	False

