



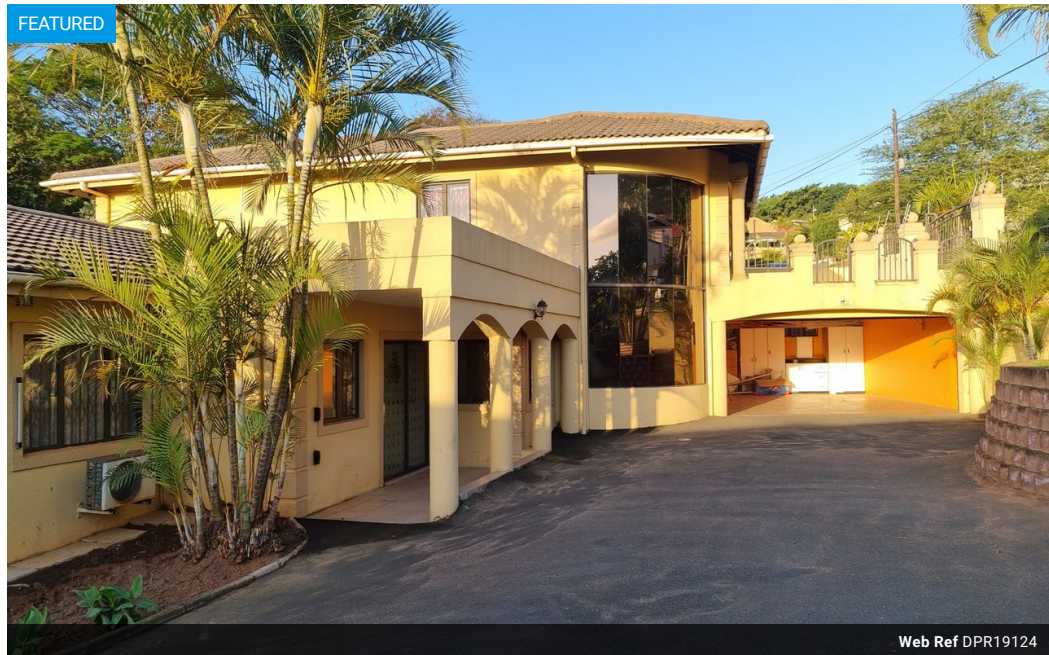
Nadine Matthee
082 377 7086
nadinematthee@dpg.co.za

Contact Umhlanga
031 5612346

Shop 13A Granada Square
16 Chartwell Drive
Umhlanga

4 Bedroom House To Let in Sunningdale

FEATURED



Web Ref DPR19124



R20,000 pm

Lease Period 12 months
Annual Escalation -
Lease Excludes:
Utilities

Availability Immediately

Deposit R20,000

 4  3  2

4 Bedroom Unfurnished House - Sunningdale

Unfurnished Family Home - 4 Bedroom 3 Bathroom (2 ens) House
Open Plan Lounge (Aircon) & Dining Area
Kitchen & Scullery
Laundry
Office
TV Lounge
Curtains Included
Tiled throughout with Built-In Cupboards & Fibre Line
Garden & Pool, Patio Area
Pets Welcome!
Double Auto Garage
House Alarm
Auto Gates
Prepaid Electricity
Shared Water & Refuse Bill (separately Let Apartment on Street Level with separate entry)
Available 1 MAY on Lease

Features

Pets Allowed	Yes		
Interior		Exterior	
Bedrooms	4	Garages	2
Bathrooms	3	Security	Yes
Kitchens	1	Pool	Yes
Recep. Rooms	3	Views	False
Studies	1		
Furnished	No		

