

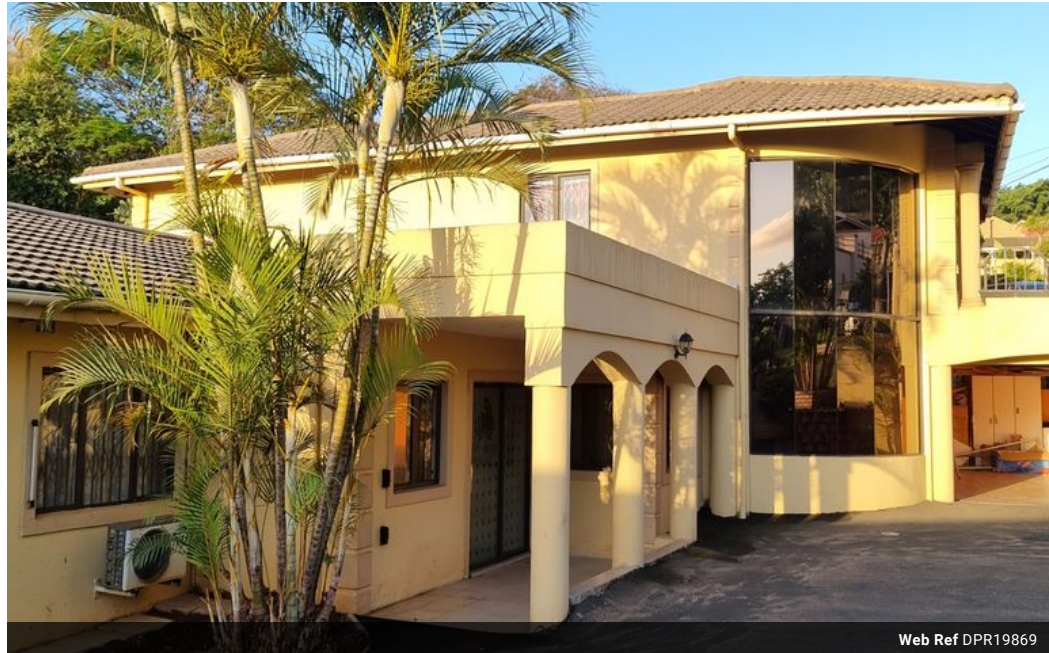


Nadine Matthee
082 377 7086
nadinematthee@dpg.co.za

Contact Umhlanga
031 5612346

Shop 13A Granada Square
16 Chartwell Drive
Umhlanga

4 Bedroom House To Let in Sunningdale



Web Ref DPR19869



R20,000 pm

Monthly Levy R1 **Monthly Rates** R1 **Lease Period** 12 months
Availability Immediately **Deposit** R20,000 **Annual Escalation** -
Lease Excludes:
Utilities

4 3 2

4 Bedroom Unfurnished House - Sunningdale

Unfurnished Family Home - 4 Bedroom 3 Bathroom (2 ens) House
Open Plan Lounge (Aircon) & Dining Area
Kitchen & Scullery
Laundry
Office
TV Lounge
Curtains Included
Tiled throughout with Built-In Cupboards & Fibre Line
Garden & Pool, Patio Area
Pets Welcome!
Double Auto Garage
House Alarm
Auto Gates
Prepaid Electricity
Shared Water & Refuse Bill (separately Let Apartment on Street Level with separate entry)
Available IMMEDIATE on Lease

Features

Pets Allowed	Yes		
Interior		Exterior	
Bedrooms	4	Garages	2
Bathrooms	3	Carports / Parkings	6
Kitchens	1	Security	Yes
Recep. Rooms	3	Pool	Yes
Studies	1	Views	False
Furnished	No		

