

2 Bedroom Simplex To Let in Sunningdale



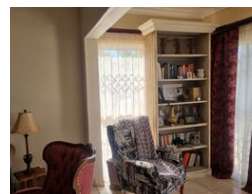
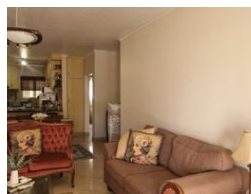
Nadine Matthee
082 377 7086
nadinematthee@dpg.co.za

Contact Umhlanga

031 5612346

Shop 13A Granada Square
16 Chartwell Drive
Umhlanga

FEATURED



R12,000 pm

Monthly Levy R1 **Monthly Rates** R1 **Lease Period** 12 months
Availability 01 Aug 2025 **Deposit** R12,000 **Annual Escalation** -
Lease Excludes:
Utilities

2 2 1

2 Bedroom Unfurnished Simplex - Sunningdale

Lovely Secure Unfurnished 2 Bedroom, 2 Bathroom (mes) Simplex Styled Townhouse
Open Plan Layout, Kitchen, Dining Area, Lounge & Enclosed Sun Room
Large Patio Area
Simplex Tiled throughout with Built-In Cupboards, Ceiling Fans, Aircon, Fibre Line & an Alarm (tenant acc)
Separate Laundry & Private Jojo Tank, with All Apartment Water Filtered!
1 Single Garage (manual) and 1 Open Parking Bay with additional private Visitor Parking Bays *dedicated to this Property!
Prepaid Electricity and Etshewini Water & Refuse Bill
Centrally Located & close to All Amenities and Feeder Roads
Regret NO PETS Permitted
Available 1 AUGUST on Lease

Features

Interior		Exterior	
Bedrooms	2	Garages	1
Bathrooms	2	Carports / Parkings	1
Kitchens	1	Security	Yes
Recep. Rooms	2	Pool	No
Furnished	No	Views	False

