

# 1 Bedroom Apartment To Let in Umhlanga Central



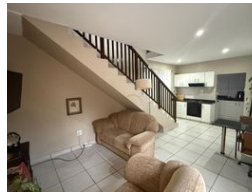
**Nadine Matthee**  
082 377 7086  
nadinematthee@dpg.co.za

Contact Umhlanga  
**031 5612346**  
Shop 13A Granada Square  
16 Chartwell Drive  
Umhlanga

## FEATURED



Web Ref DPR18960



**R8,500 pm**

1   1

**Monthly Levy** R1   **Monthly Rates** R1   **Lease Period** 12 months  
**Availability** Immediately   **Deposit** R8,500   **Annual Escalation** -  
**Lease Excludes:**  
Prepaid Electricity

## 1 Bedroom Unfurnished - Umhlanga (on Residential Property)

Secure Unfurnished 1 Bedroom Apartment  
\*Suit SINGLE/COUPLE PROFESSIONAL with 1 CAR  
Split Level - Bedroom & ens on Upper Level  
Kitchen, Scullery & Lounge/Dining on Lower level  
Regret NO Pets Permitted  
Available 1 MAY on Lease  
Rental includes Water, Prepaid Electricity  
Fibre Line in place

## Features

### Interior

Bedrooms	1
Bathrooms	1
Kitchens	1
Recep. Rooms	2
Furnished	No

### Exterior

Carports / Parkings	1
Security	Yes
Pool	No
Views	False

