

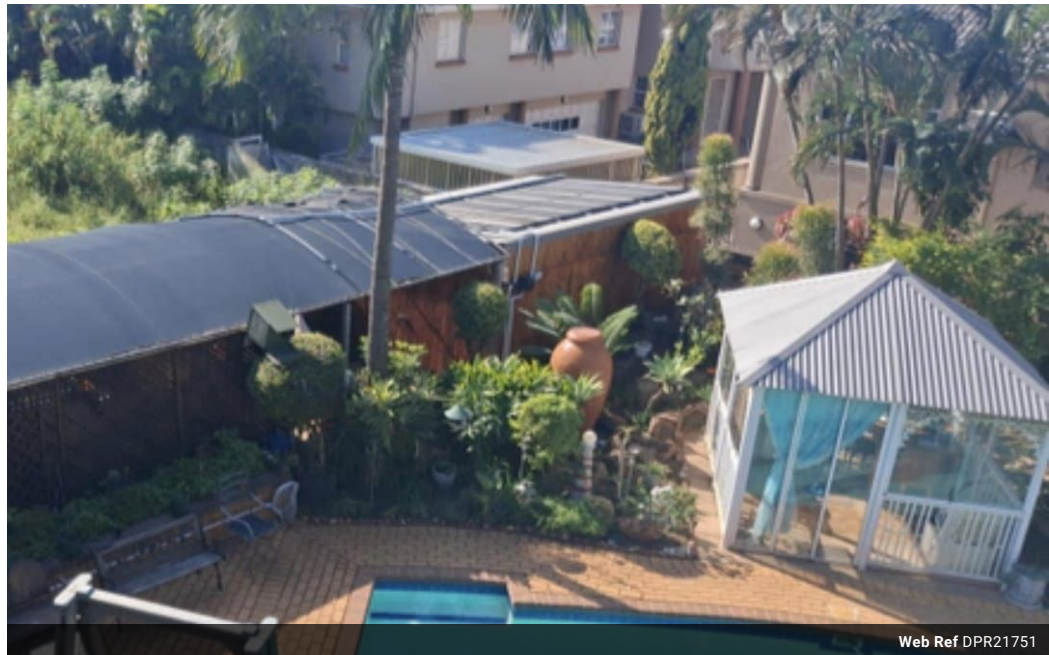


Donovan Loubser
082 569 5091
donovanloubser@dpg.co.za

Contact Umhlanga

031 5612346

Shop 13A Granada Square
16 Chartwell Drive
Umhlanga



Web Ref DPR21751



R8,500 pm

Lease Period 12 months
Annual Escalation -

Availability Immediately

Deposit R8,500

1 1

Fully Furnished Studio

Modern Fully Furnished Studio in Umhlanga Ridge

This stylish and fully furnished studio apartment is perfect for a single professional or corporate tenant. Ideally located in the heart of Umhlanga Ridge, it offers a comfortable and convenient lifestyle.

Features

Fully furnished, move in ready

Use of the sparkling complex pool

Secure parking for your peace of mind

Wi-Fi, water and electricity included

Once a week cleaning of unit

Enjoy a lockup and go lifestyle with everything you need at your fingertips just minutes from Gateway Umhlanga Beach and major

Features

Interior

Bedrooms	1
Bathrooms	1
Kitchens	1
Furnished	No

Exterior

Carports / Parkings	1
Security	No
Pool	No
Views	False

Sizes

Floor Size	45m²
------------	------