



**Mervin Donnelly**  
061 696 8809  
mervin.d@dpg.co.za

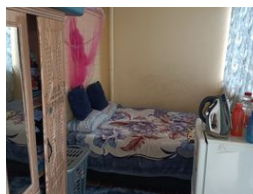
Contact Head Office - Dormehl  
Lite

012 0000000

1170 Moulton Avenue  
Waverley  
0184



Web Ref DPR21629



**R380,000**

0.5 1

**Monthly Bond Repayment** R3,793.84

Calculated over 20 years at 10.5% with no deposit.

**Transfer Costs** R16,862.00 **Bond Costs** R11,960.00

These calculations are only a guide. Please ask your conveyancer for exact calculations.

Calling all first time buyers and investors!!!

Dormehl Phalane proudly presents this spacious bachelor apartment for sale in South Beach. The property consist of:

Fitted kitchen  
Family bathroom  
Spacious lounge/bedroom  
1 undercover parking

To view this property please contact Mervin Donnelly

## Features

### Interior

Bedrooms	0.5
Bathrooms	1
Kitchens	1
Recep. Rooms	1
Furnished	No

### Exterior

Carports / Parkings	1
Security	Yes
Pool	No
Views	False