



**Enock Matla**  
071 040 7148  
enockmatla@dpg.co.za

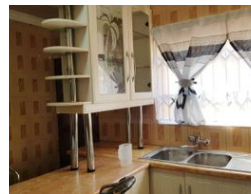
Contact Vanderbijlpark /  
Sasolburg

016 4232876

Vision 21, Industrial Park,  
Shop 26,  
Steel Road,  
Duncanville,  
Vereeniging



Web Ref DPR11041



**R740,000**

3 Bedrooms 2 Bathrooms 1 Kitchen

**Monthly Bond Repayment** R7,512.69

Calculated over 20 years at 10.75% with no deposit.

**Transfer Costs** R25,898.00 **Bond Costs** R19,565.00

These calculations are only a guide. Please ask your conveyancer for exact calculations.

**Monthly Rates** R750

## Convenient 3-Bedroom Home Near Amenities

Welcome to this charming 3-bedroom house conveniently located near the bustling Cambridge Complex, offering a plethora of amenities to enhance your lifestyle. Keeping fit is a breeze with a gym just around the corner, ensuring you can stay in shape without any hassle. For those days when you're craving take-out, the Evaton Mall is a mere stone's throw away, offering a variety of dining options to satisfy your taste buds. Traveling has never been easier, as the property is situated close to the taxi rank, streamlining your daily commute. Additionally, major routes like the N1 are easily accessible, making long-distance travel a breeze, whether you're visiting family or attending to urgent matters.

This delightful property boasts a double garage for your convenience and security. Inside, you'll find two well-appointed...

## Features

Interior		Exterior		Sizes	
Bedrooms	3	Garages	1	Land Size	216m²
Bathrooms	2	Security	No		
Kitchens	1	Pool	No		
Furnished	No	Views	False		

